



CoP Documentation

Installation Guide v1.5

Content

Disclaimer	1
Purpose	2
Required configuration	2
Installation procedure	2
Launch CoP	9
Release notes	9
References	9

Disclaimer

This software facilitates engineering studies with respect to steel constructions. Based on calculation methods complying with the principles of the applied standards or design recommendations, this software enables to make a certain number of calculations and verifications in view of evaluating a solution for design. It does not enable to analyse all situations and to make in an exhaustive way all relevant calculations needed for a complete design of a structure.

Given the complexity of the calculation methods, this software is only intended for professional users active in the domain of steel constructions (who are fully aware of the possibilities, limits and its adequacy thereof for specific practical cases). The user shall use the software under his own responsibility and at his own risks.

This software has been developed by Feldmann + Weynand GmbH (F+W), Germany. No right is granted to the user of the software, the property and intellectual rights of which continue to belong exclusively to F+W. No warranty is granted to the user.

The user undertakes to hold F+W free and harmless from any claim and any direct and/or consequential damages, in particular those resulting from an incorrect or inappropriate use or a use made for an inadequate or inappropriate purpose.

By using this software the user expressly declares that he has carefully read the above text and that he thereby accepts all legal consequences and obligations resulting for him therefore.

Purpose

During the so-called conversion period from the Eurocode ENV to European Standard EN, major changes have been brought to the new Eurocode 3 EN 1993 Part 1-1 [1]. CoP is a special software package to design joints according to the new EN version of Eurocode 3. The present user manual gives a comprehensive overview on how to use the software.

The application of the design methods for joints, in particular for composite joints, is rather complex and long to apply. Therefore design tools for practitioners are required for a safe and economic application of the new Eurocode 3. The software CoP has been developed in order to provide the designer a simple tool to perform a full set of design checks according to the new EN 1993-1-8 for the design of joints.

Required configuration

The software is designed for Microsoft Windows. The software has been tested on Windows XP. It should also run under Windows 2000, Windows Vista and Window 7, but this is not assured. To install and run the software 512 MB memory and 15 MB hard disk space is required.

The software is developed for the Microsoft .NET Framework. If the .NET Framework is not yet installed, this will be done automatically during the setup procedure. In this case additional 280 MB disk space must be available for installation.

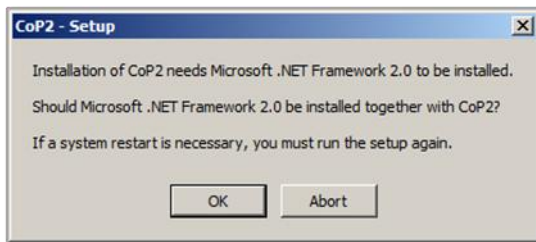
Installation procedure

In order to install the CoP software on a PC execute the provided installation file "CoP2_x.y.z_Setup" ("x.y.z" representing the actual version number). The following screen appears:



Select a language for the installation procedure and press "OK" to continue.

In case of a missing Microsoft .NET 2.0 SP2 Framework you will be prompt to confirm the installation of Microsoft .NET 2.0 SP2 Framework.



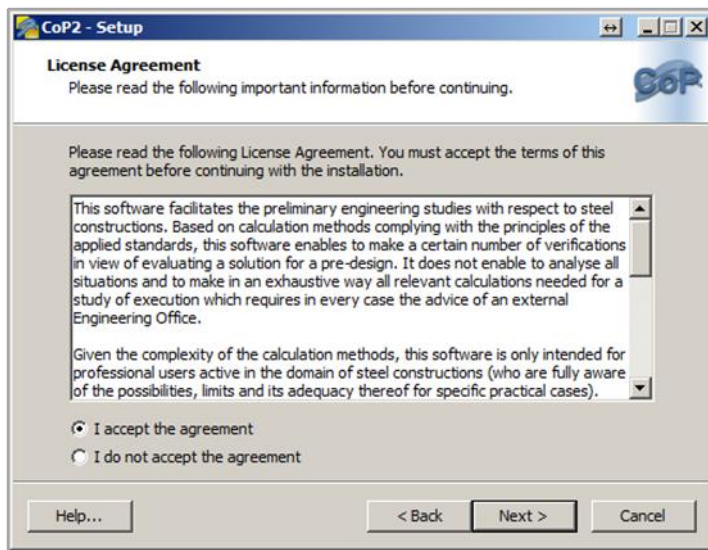
Press "OK" to install .NET 2.0 SP2 Framework together with CoP. In this case the Setup Welcome page will appear as shown below. Press "Abort" to quit the installation procedure.

The CoP Setup Wizard will start.



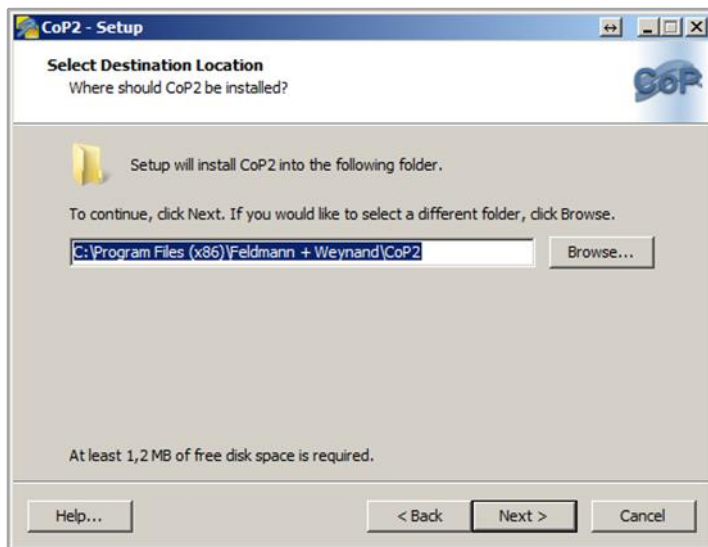
Press "Next >" to continue.

The following screen shows the license agreement. Please scroll down the text box in order to read the full agreement.



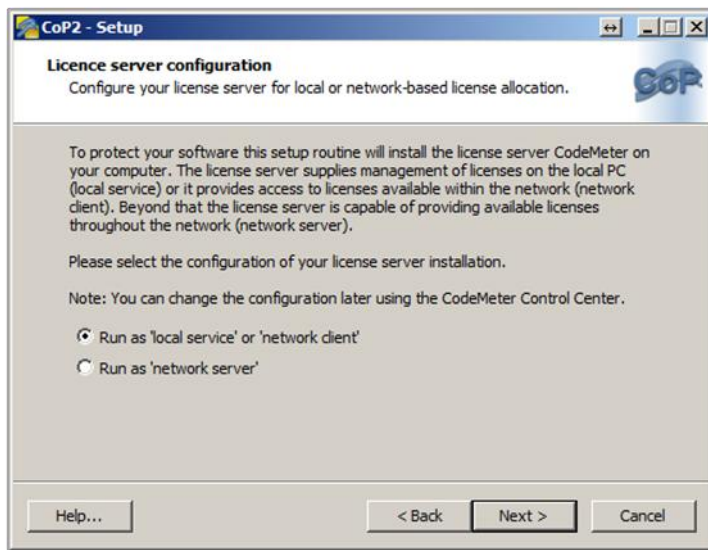
To accept the license agreement click on "I accept the agreement" and then press "Next >".

On the following screen you can specify the installation folder. Press "Next >" to continue.



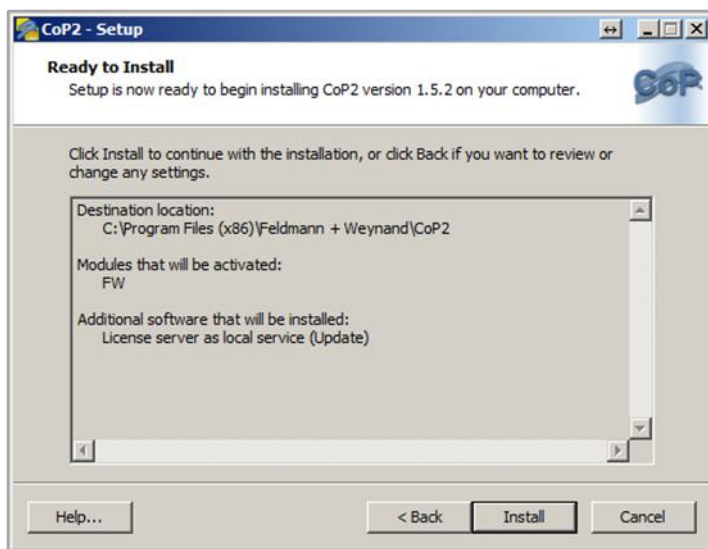
In case of installing a commercial edition of CoP (CoP Lite or CoP Professional) you may decide on the next screen how to configure the licence server. In case you bought a single license, select *Run as 'local service' or 'network client' (default)*.

Note: This page will not be shown if you install one of the free Editions of CoP (AME – Arce-lorMittal Edition or VME – Vallourec & Mannesmann).



Select the configuration of the desired licence server installation and press "Next >" to continue.¹

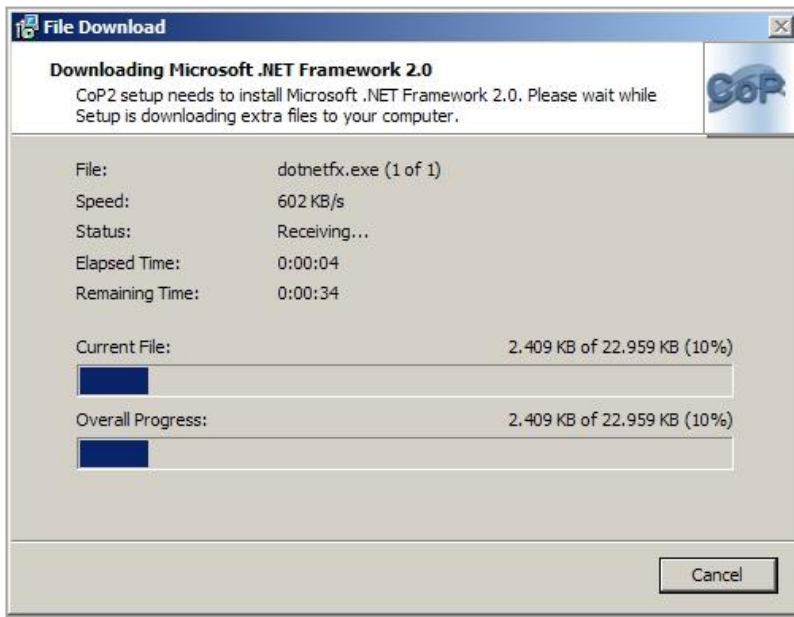
If all settings are correct, click "Next >" to start the installation process.



Press "Cancel" to terminate the installation procedure.

If you agreed to install Microsoft .NET 2.0 SP2 Framework together with CoP the installation procedure will automatically start downloading the .NET installer. A progress bar will be shown during the file download.

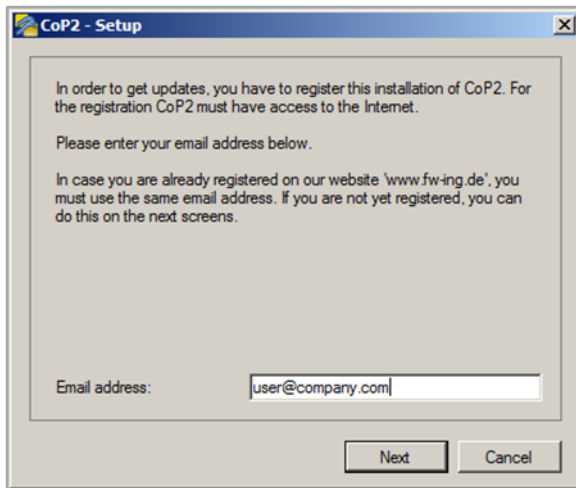
¹ For a detailed guide on how to install network licences please refer to the document http://cop.fw-ing.de/fileadmin/downloads/CoP_Guidance_for_Installing_Network_Licences.pdf.



Once the file download has been finished, follow the instructions of the Microsoft .NET 2.0 SP2 Framework Setup to install the Microsoft .NET Framework.

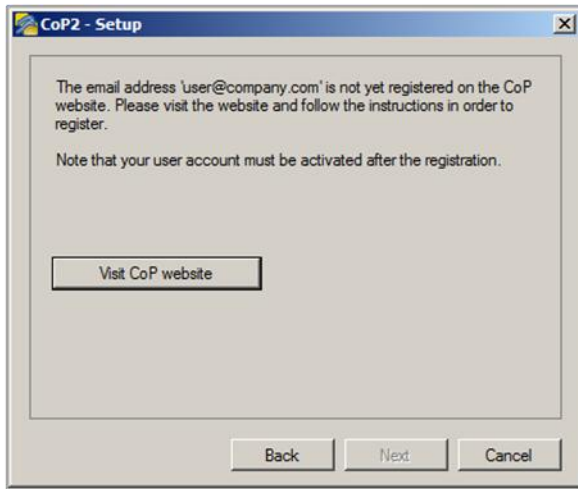
The installation procedure will then continue to install CoP on your computer.

After CoP has been installed on your computer you will be asked to register your installation of CoP. In order to register your installation of CoP you must have access to the Internet.

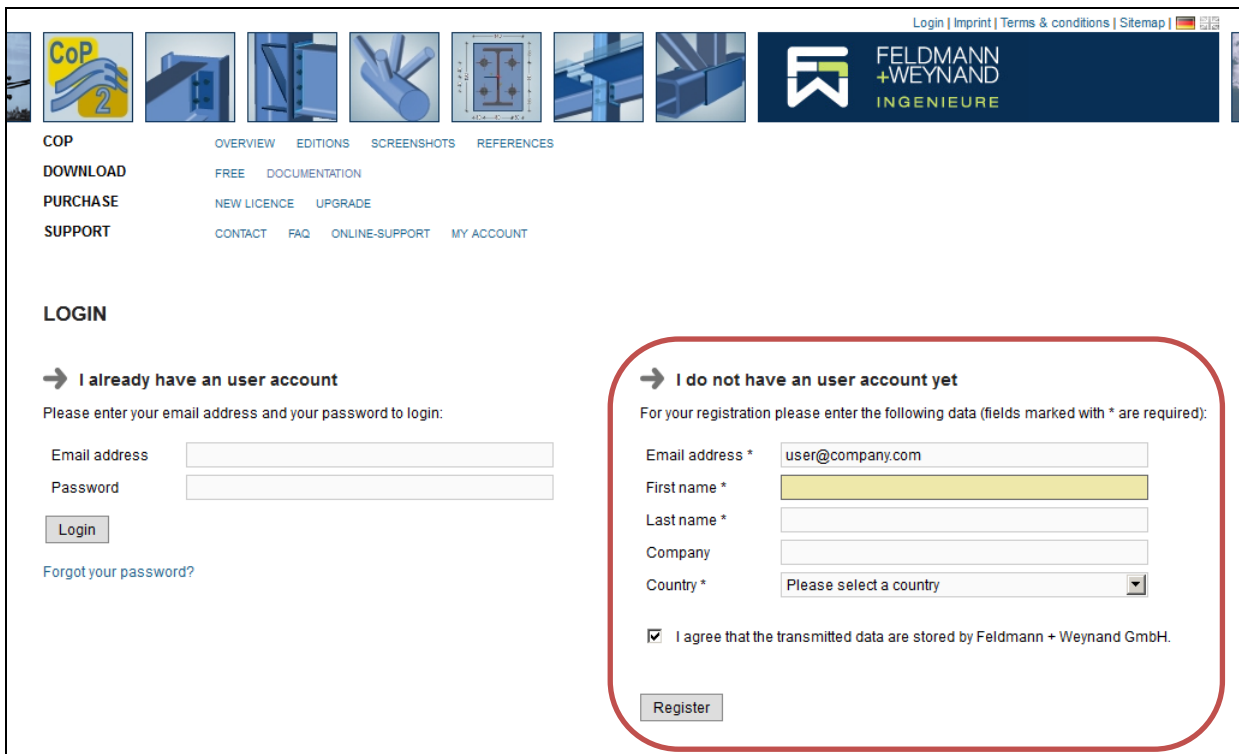


Press “Cancel” if you want to skip the registration and proceed with the installation procedure. You can register your installation of CoP later on. If you want to proceed with the registration procedure type in your email address and press “Next”. Remember to use the same email address if you are already registered on our website ‘www.fw-ing.de’.

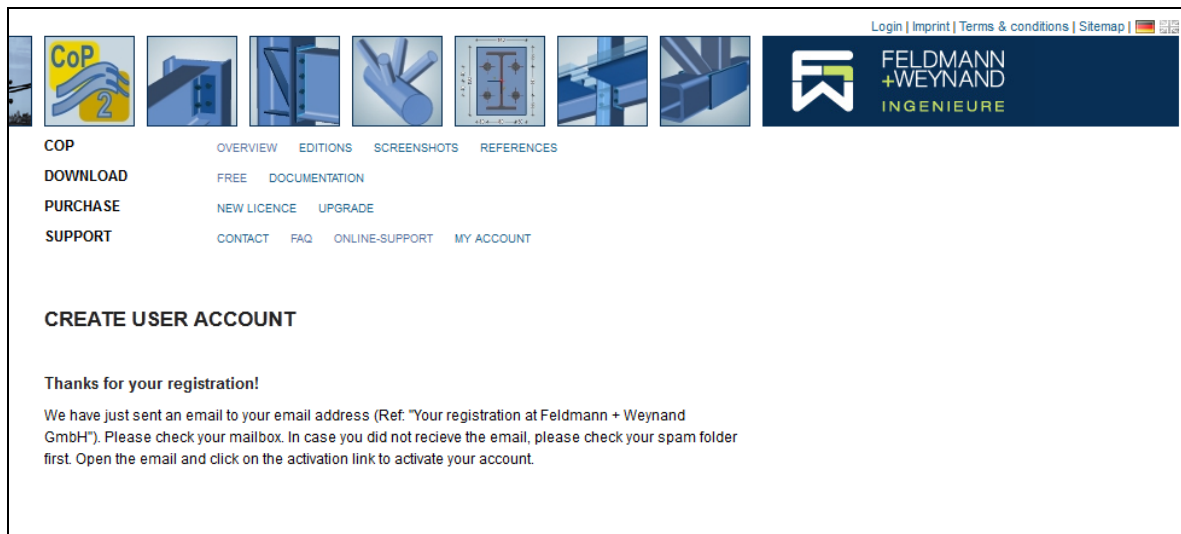
In case you are not already registered on our website you will be asked to visit the CoP website in order to register.



Click on the button “Visit CoP website” to open the website in your web browser.

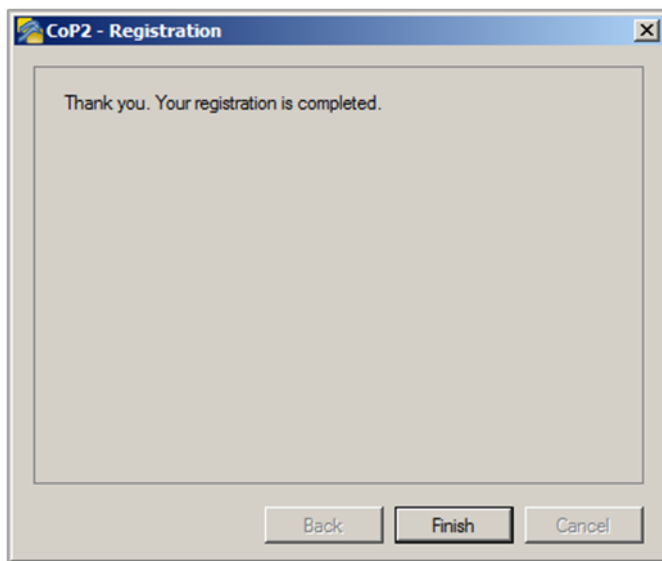


Enter your registration data into the form on the right site of the web page and click on button “Register”. The following web page will be displayed.



In order to finish your registration of CoP your email address has to be verified. Follow the instructions on the web page to finish your registration.

After you clicked on the activation link in the email switch back to CoP and click on Button "Next". Your registration is now completed.



Your installation of CoP is now registered. You will receive free updates for CoP.

After the installation has been finished a final page will summarise the installation results and offer an optional start of the installed CoP application.

Option "View ReleaseNotes.txt" will be selected by default. Deselect this option if you don't want to view the release notes. Select option "Start CoP now" to start CoP after the setup has been exited. Press "Finish" to exit the installation procedure.



The software CoP is now completely installed on your PC and appropriate links to launch the software are available.

Launch CoP

To launch CoP, click on the CoP icon on your desktop, or select "Start – Program – Files – Feldmann + Weynand – CoP2".

Release notes

Release notes (history file) can be found at:

<http://cop.fw-ing.de/en/download/documentation>

References

- [1] Eurocode 3; Design of steel structures. Part 1–1, General rules and rules for buildings, EN 1993–1–1, CEN, Brussels, May 2005.