



COP 3 Documentation

Installation Guide

Content

Disclaimer	1
Purpose	1
Required configuration	2
Installation procedure	2
Launch COP	5
Install / activate licence	5
Installation of network licences	7

Disclaimer

Due to the complexity of the calculation methods used, this software is only intended for professional users active in the domain of steel constructions who are fully aware of the possibilities, inadequacies and suitability of the software for the various concrete applications. THE USER USES THIS SOFTWARE ON HIS OWN RESPONSIBILITY AND AT HIS OWN RISKS.

This software was developed by Feldmann + Weynand GmbH (hereinafter F+W) in cooperation with Feldmann + Weynand Engineers GmbH (hereinafter FWC). No right or warranty is granted to the user of the software. All rights (including intellectual property) continue to belong exclusively to F+W and FWC respectively. F+W and/or FWC do not assume any liability towards the user of this software.

The user of this software undertakes to hold F+W and FWC free and harmless from any claim and any direct and/or consequential damages.

BY USING THIS SOFTWARE, THE USER OF THIS SOFTWARE CONFIRMS THAT HE IS AWARE OF THE ABOVE TEXT AND THAT HE THEREBY ACCEPTS ALL LEGAL CONSEQUENCES AND OBLIGATIONS RESULTING FOR HIM THEREFORE.

Note:

This text is an English translation of the German disclaimer. In case of any ambiguities, the disclaimer in German shall always apply.

Purpose

COP is a special software package to design joints according to the European standard EN 1993 (Eurocode 3), and here in particular EN1993-1-8.

The application of the design methods for joints is rather complex and long to apply. Therefore design tools for practitioners are required for a safe and economic application of the Eurocode 3. The software COP has been developed in order to provide the designer a simple tool to perform a full set of design checks according to EN 1993-1-8 for the design of joints.

The present documentation gives a comprehensive overview on how to install the software.

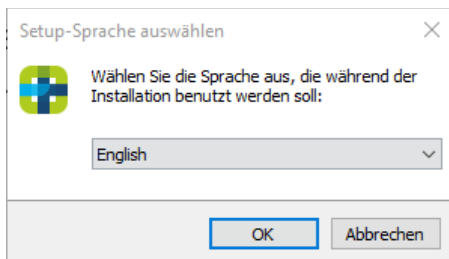
Required configuration

The software is designed for Microsoft Windows. The software has been tested on Windows 10. It should also still run under Windows 7, but this is not assured. To install and run the software 500 MB memory (minimum) and 400 MB hard disk space is required.

The software is developed for the Microsoft .NET Framework. The .NET Framework version 4.6 or higher must be installed.

Installation procedure

In order to install the COP software on a PC execute the provided installation file "COP_x.y.z_Setup" ("x.y.z" representing the actual version number). The following screen appears:



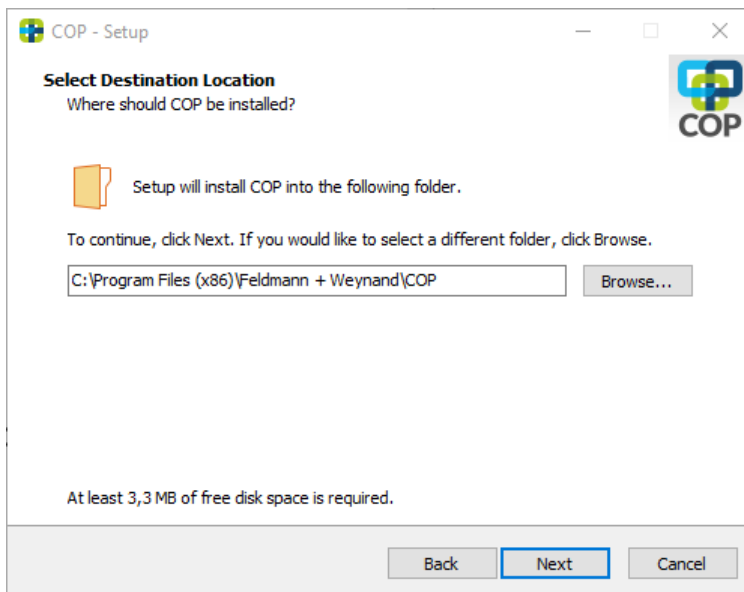
Select a language for the installation procedure and press "OK" to continue.

The COP Setup Wizard will start.



Press “Next” to continue.

On the following screen you can specify the installation folder.



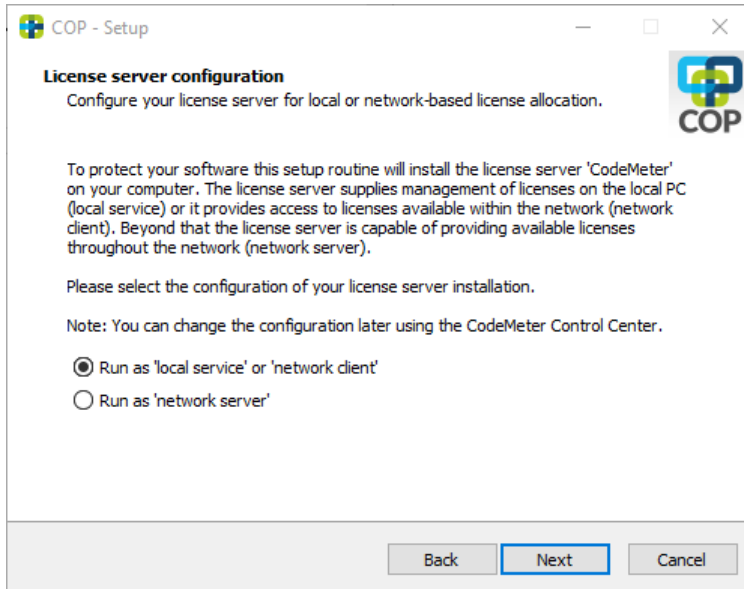
Press “Next” to continue.

To protect your software, the licence server 'CodeMeter' is used. COP installs a third party software called CodeMeter including a service called “CodeMeter Runtime Server”, hereinafter also referred to as “license server”. CodeMeter is a licensing and digital rights management system from Wibu-Systems (www.wibu.com).

As a local service, the licence server manages licences on the local PC and, at the same time, it enables as a 'network client' the access to licences available in the network. In addition, the licence server can be configured as a 'network server' and thus make network licences available throughout the network.

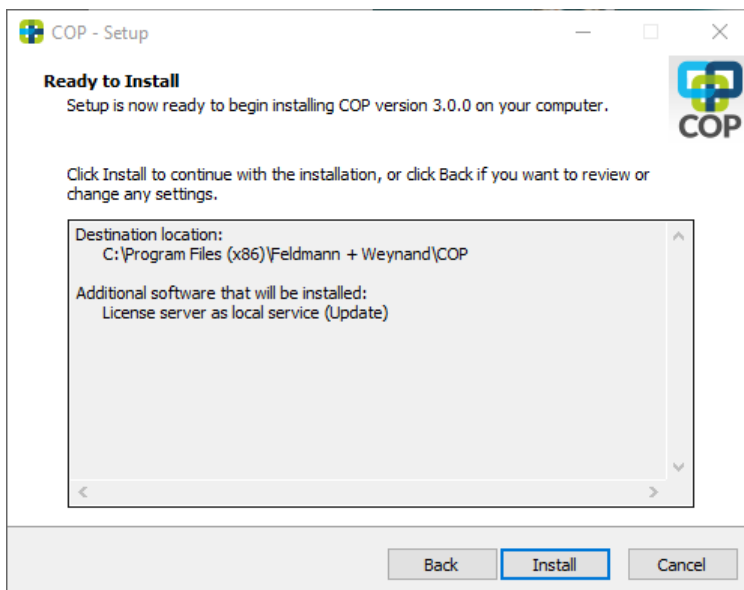
If the CodeMeter software is already installed on your machine, COP will update the software if necessary. If the already installed CodeMeter software has a newer version, COP will of course skip the installation of CodeMeter.

On the next screen you may decide how to configure the “license server”. In most cases, you would select the first option “Run as ‘local service’ or ‘network client’” (default). Only in case you bought a network license and you are installing COP on a machine that will (also) provide your license to other machines, select the second option “Run as ‘network server’”. Detailed instructions for the installation of network licences can be found below in the chapter “Installation of network licences”.



Note: If the licence server is already installed on this computer and configured as a network server, the configuration cannot be changed here since the licence server may also be used by other software. However you can change the configuration later using the CodeMeter Control Center.

Select the desired configuration and press “Next” to continue. The “Ready to Install” page will appear.



If all settings are correct, click “Install” to start the installation process.

Press "Cancel" to terminate the installation procedure here.

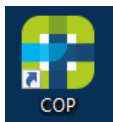
After pressing “Install”, the installation procedure will start to install COP on your computer. When done, so the following screen will appear.



Click “Finish” to exit the setup program. Unless you unselect the option “Start COP now”, COP will be started after the setup program is terminated.

Launch COP

To launch COP, click on the COP icon on your desktop



or select “Windows Start | Feldmann + Weynand | COP”

The first time COP is started, the welcome window appears. Please confirm the disclaimer. COP starts and displays the page “New - Create a new project”.

Install / activate licence

If you have purchased a new COP licence, you still have to install or activate this licence after installing COP.

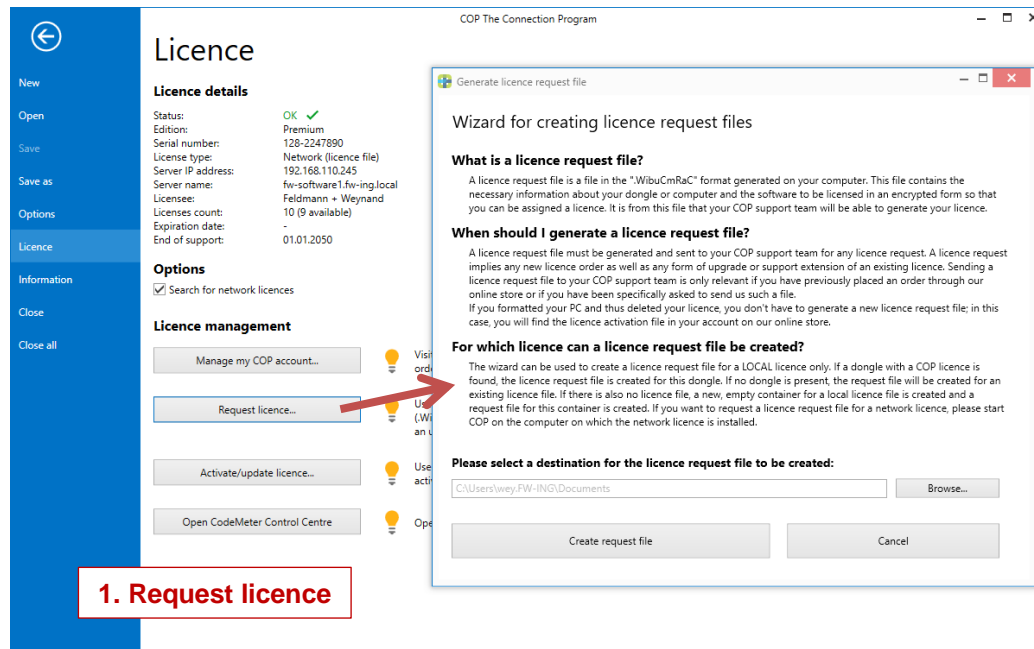
COP is protected to prevent illegal copying. Two types are available for the software protection:

SOFTWARE-BASED PROTECTION (“LICENCE FILE”)

With the software-based protection, the software is protected by installing a licence file on the local computer (or on a licence server in the case of a network licence). Please note that the software-based protection (licence file) is bound to the computer hardware and therefore cannot be transferred to another computer. Likewise, this type of protection cannot be used in virtual environments.

To create a new licence as software-based protection (i.e. a licence file), we need a **licence request file** from you. The licence request file contains characteristics of the

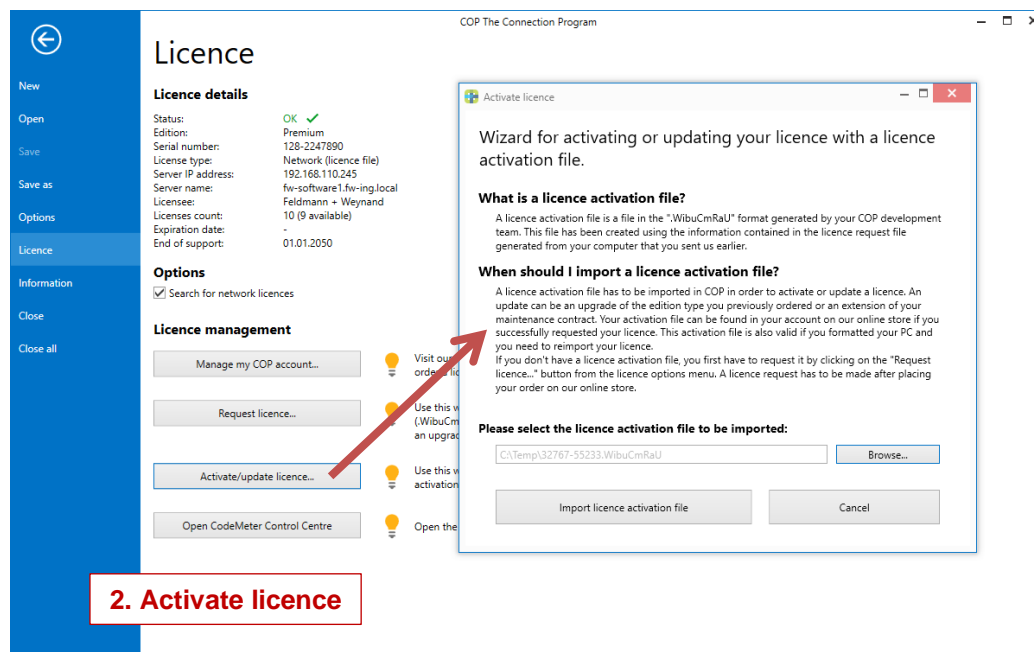
hardware on which the licence file should be installed. Start COP and open the page “Licence” in the menu “File”. There, click on the button “Request licence...” to start the “Wizard for creating licence request files”. Select any directory in which the licence request file should be saved and click on “Generate licence request file”. Please send the generated licence request file (*.WibuCmRaC) by email to software@fw-ing.de.



We will then send you an email with your personal **licence activation file**, which you can install on your computer using the licence activation wizard integrated in COP.

Please note: The licence file can only be installed / activated on the computer on which the licence request file was created.

Save the licence activation file (*.WibuCmRaU) in any directory. Start COP and open the “Licence” page in the “File” menu. There you start the “Licence activation wizard” by clicking on the button “Activate/update licence...”. Use the “Browse” button to select the directory in which you have saved the licence activation file and then click on the “Import licence activation file” button.



COP will now import and activate the licence. When the process is complete, the licence is automatically recognised by COP and the corresponding licence information is displayed at the top of the page.

HARDWARE-BASED PROTECTION (“DONGLE”)

After purchasing a licence with hardware-based protection, we will send you a ready-configured dongle with your personal licence by post. Plug the dongle into a USB port on your computer (or, in the case of a network licence, into a USB port on the licence server). After the installation of COP, COP will automatically recognise the dongle.

Note: You can use the dongle at any computer on which COP is installed, i.e. the licence can easily be transferred from one computer to another.

Installation of network licences

1. GENERAL

All the steps to install COP network licences are explained below. For this purpose, a network server and any number of local clients (network clients) will be installed. The network server provides available licences that are recognised by the network clients automatically.

To install both the network server and network clients, please use the same COP setup file, which you can download at any time from the customer area on the COP website.

2. NETWORK SERVER – INSTALLATION AND CONFIGURATION

2.1 Software based Protection (“Licence File”)

Installing Software

First install COP on a computer which you would like to use as network server. This can be any Windows machine, i.e. also a workstation. However, it should be a computer

that can always be accessed within the network. During installation, select in the setup wizard on page “Licence server configuration” the option “*Run as ‘network server’*”.

Note: Please note that a software based protection (licence file) cannot be installed on virtual machines. To install COP on a virtual machine, you need a hardware based protection (dongle).

Install / activate licence

If you have purchased a new COP licence, you still have to install or activate this licence after installing COP. Detailed instructions can be found above in the chapter “Install / activate licence”.

Note: The network server that has now been installed can also be used as a workstation for COP. Install COP now on any number of additional computers as described below in the chapter “3. Network Clients – Installation and configuration”.

2.2 Hardware based Protection (“Dongle”)

Installing Software

First install COP on a computer which you would like to use as network server. This can be any Windows machine, i.e. also a workstation. However, it should be a computer that can always be accessed within the network. During installation, select in the setup wizard on page “Licence server configuration” the option “*Run as ‘network server’*”. Start COP afterwards. COP will detect the dongle automatically as soon as you connect the dongle to your computer.

Note: The dongle can be plugged in or removed at any time. The current state is always recognised by all clients in the network. Attention! If you remove the dongle when a network client is using one licence of this dongle, the network client loses the licence and all program features linked to this licence will be locked. However, the project can be saved, so that no data is lost. If you plug in the dongle again, the network client will automatically find the licence again, and you can continue using COP without any restriction.

3. NETWORK CLIENTS – INSTALLATION AND CONFIGURATION

Install COP on each of your client computers by executing the COP setup file. In the setup wizard on the page “Licence server configuration” select the option “*Run as ‘local service’ or ‘network client’*” (default setting). Start CoP afterwards.

In order to find the network licence of COP, the option “Search for network licences” in the menu “File” on the page “Licence” must be activated. After a new installation of COP this option is always activated. As soon as the network server is ‘visible’ for this client computer, COP will find the licence server automatically. The licence server will then immediately allocate a licence for this client, provided that not all licences are in use at this moment.